

# **ASPROFOS ENGINEERING S.A.**

**Permitting, Safety  
and  
Environmental Engineering Solutions**

---



# Contents

## 1. Identifying ASPROFOS

## 2. ASPROFOS Services

## 3. Why ASPROFOS ?

## 4. Successfully Executed Projects

# Identifying ASPROFOS -

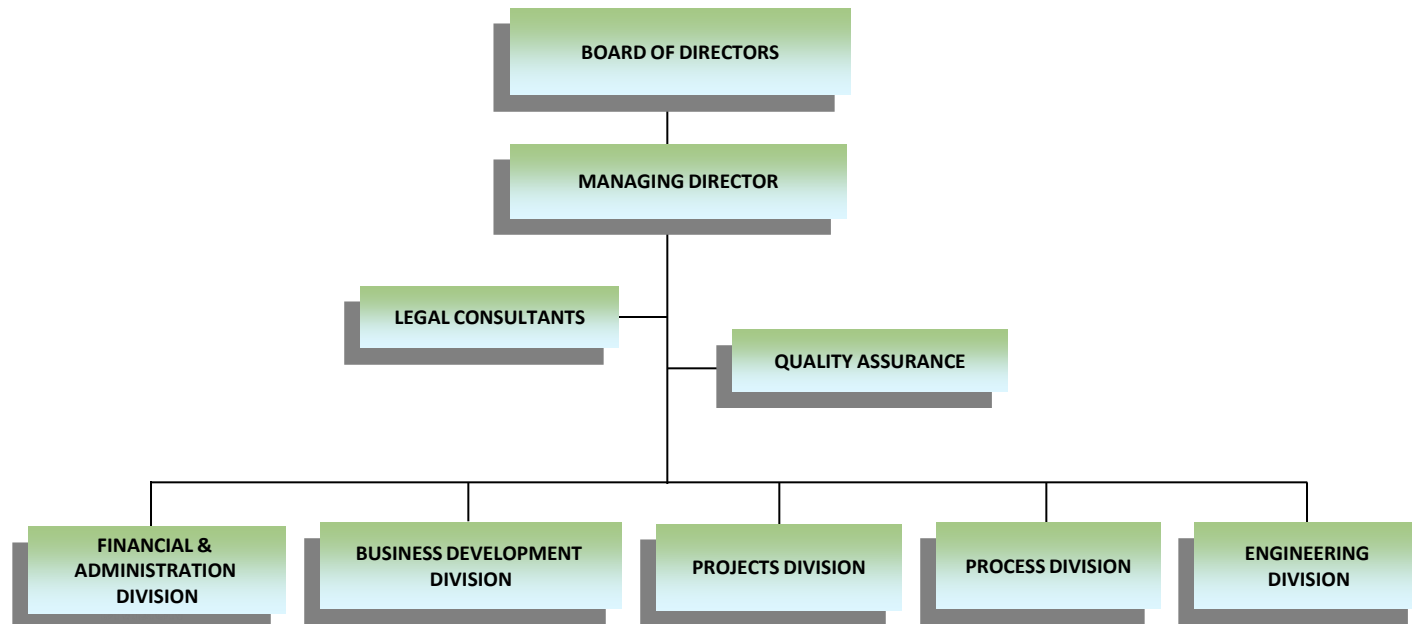
## *30 Years of Engineering Solutions*

---

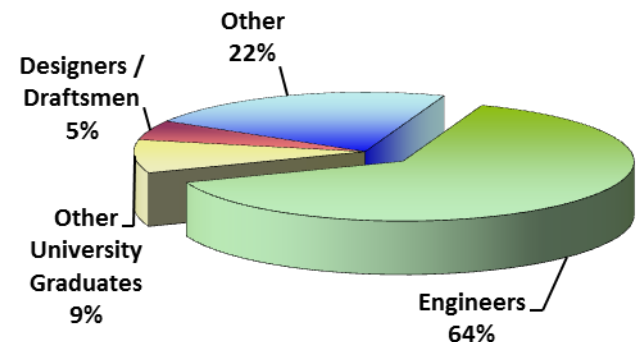


- ✓ The **largest** engineering consultancy company in Greece
- ✓ Established in **1983** as a JV between Hellenic Aspropyrgos Refinery and Foster Wheeler Italiana
- ✓ Belongs to the **Hellenic Petroleum Group** of Companies
- ✓ Provides engineering and consultancy services predominantly in the Oil & Gas Sectors
- ✓ Provides **economical** solutions that cover clients' project needs

# Identifying ASPROFOS – Organization



Workforce of 198 persons



# Identifying ASPROFOS – *Fields of Expertise*

**NATURAL GAS**



**POWER PLANTS**



**REFINERIES**



**LNG**



**PIPELINES**



**WASTES MANAGEMENT**



**RENEWABLE ENERGY  
SOURCES**



# Contents

## 1. Identifying ASPROFOS

## 2. ASPROFOS Services

## 3. Why ASPROFOS ?

## 4. Successfully Executed Projects

# ASPROFOS Services – *Overview*

- ✓ Authorities Engineering and Stakeholders' Engagement
- ✓ Safety Studies
- ✓ Environmental and Social Impact Assessment (ESIA), from Feasibility level to Reviewing services, incl. IPPC Studies
- ✓ Landscape Studies
- ✓ Wastes Management
- ✓ Health, Safety and Environment Management Systems

Additionally, services offered include:

- ✓ GIS and Remote Sensing for ESIA and Environmental Monitoring
- ✓ Research for European Programs
- ✓ Compilation of Technical Expert's Report

Services provided are in full:

- ✓ Compliance with National and International Legislation
- ✓ Compliance with EBRD and WB financing performance requirements



# ASPROFOS Services – Authorities Engineering & Stakeholders' Engagement



## Services offered:

- ✓ Issuance of Installation and Operation Licenses, Power Production Licenses, Environmental License
- ✓ Contact with Ministerial, Regional and Municipal Authorities, Decentralized Administration, NGOs, CSOs, Institutes and Third Parties
- ✓ Investigation of Engagement with Regional Plans, Land Uses, Development Plans (existing and future), Cultural Heritage, Social and Environmental Constraints
- ✓ Land and Easement Acquisition Consulting, incl. Cadastral Studies and Expropriation Procedure
- ✓ Financing Document Preparation
- ✓ Consulting for Concession of Use for Seashores and Coastal Areas
- ✓ Site Visits and Follow up of permits issuance
- ✓ Project's Disclosure and Public Consultation



---

### Services offered:

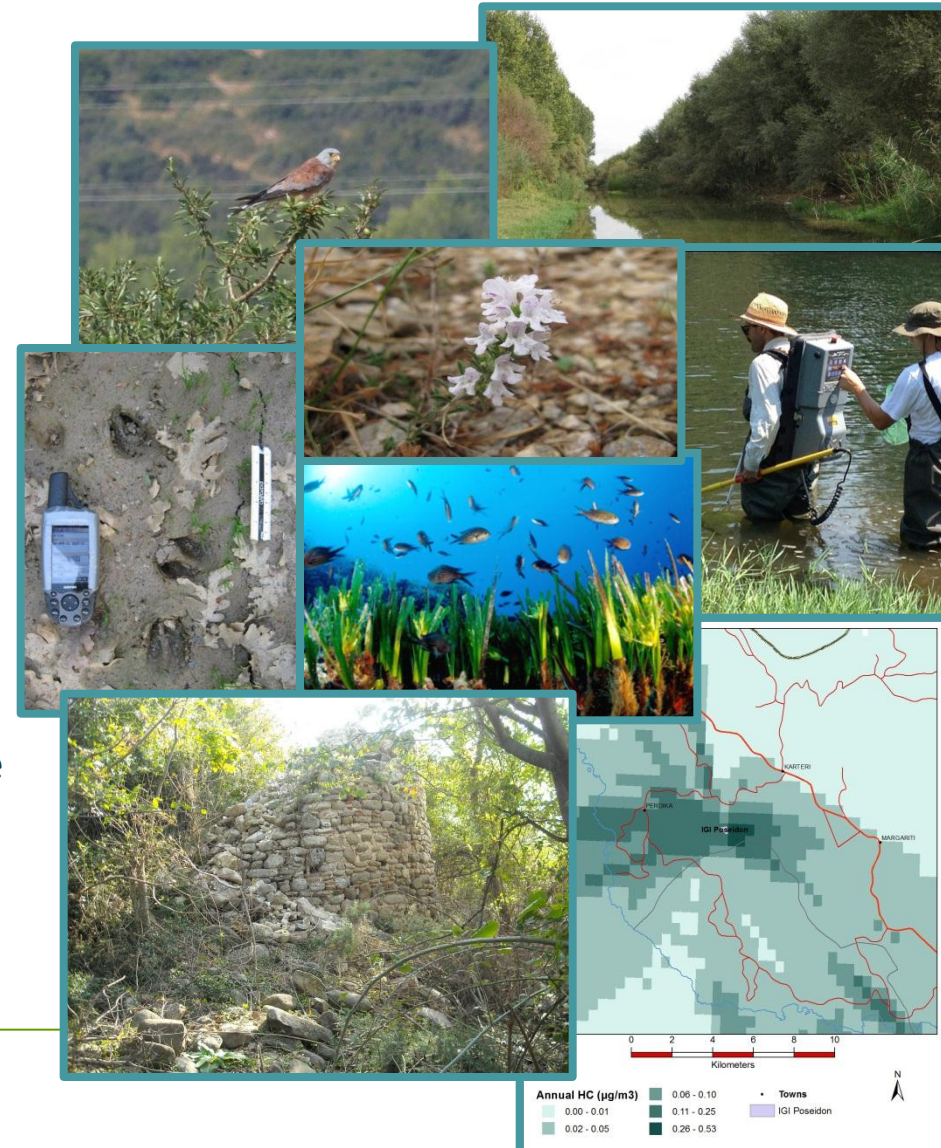
- ✓ Internal Contingency Plans
- ✓ SEVESO II, HAZOP, SIL etc.
- ✓ Explosion Protection Documents (EPDs) and Drawings (ATEX)
- ✓ Hazardous Chemicals Management Studies
- ✓ System & Documentation of Health and Safety Preparation
- ✓ Installation & Personnel Security Studies (SECURITY SYSTEMS)
- ✓ Fire Prevention Studies and Fire Fighting Studies
- ✓ Natural Gas Pipeline Systems Safety Studies
- ✓ Risk Management
- ✓ Safety and Risk Assessment Study (incl. population density data, QRA calculations)

# ASPROFOS Services –

## *Environmental and Social Impact Assessment*

### Services offered:

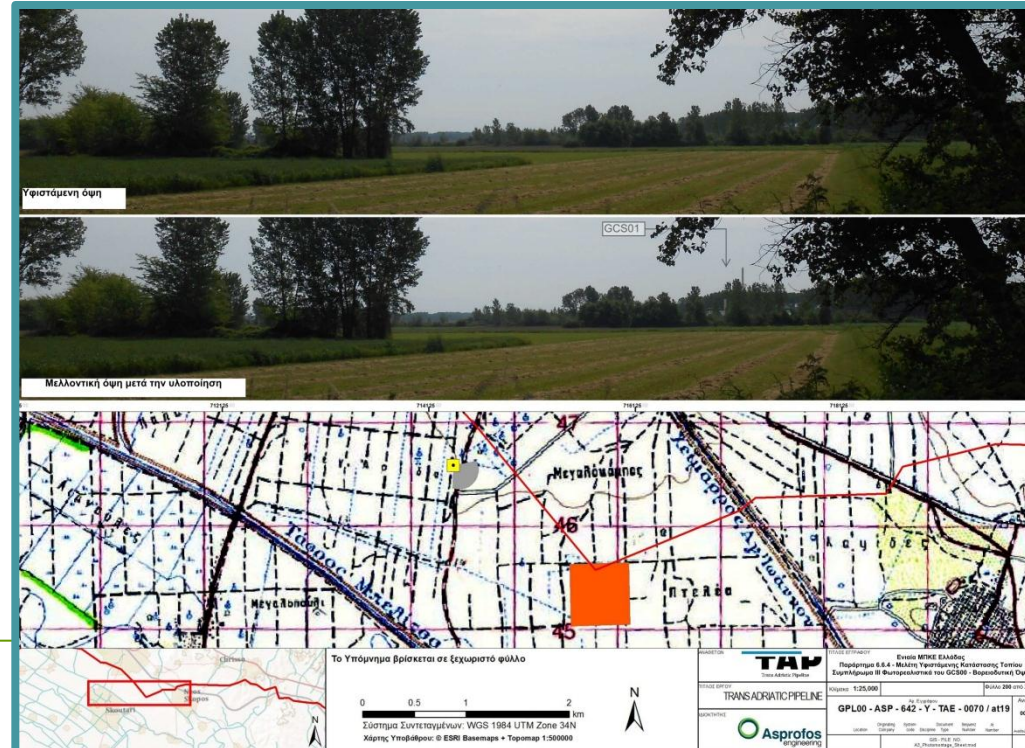
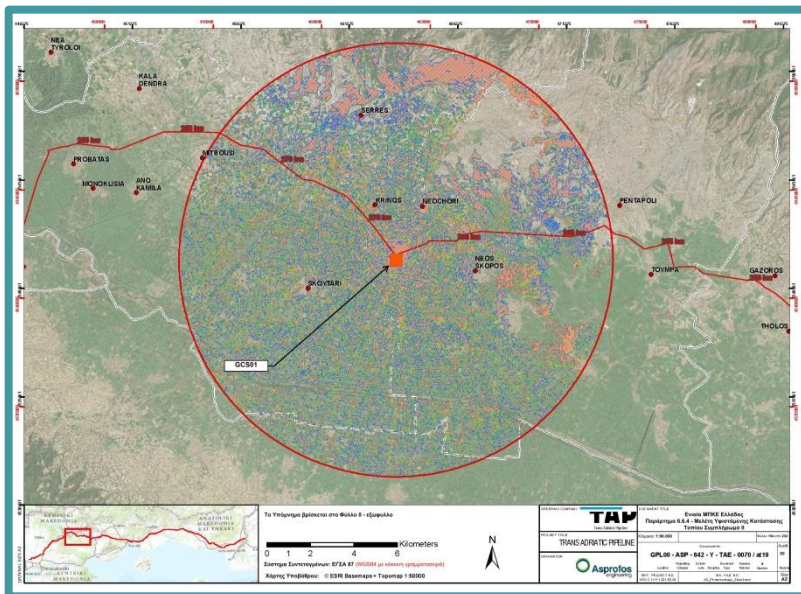
- ✓ Elaboration of Environmental and Social Impact Assessment
- ✓ Strategic Environmental Impact Assessment
- ✓ Feasibility studies
- ✓ Preliminary Identification of Environmental Requirements (*Scoping Report*)
- ✓ Application file for Renewal and/ or Amendment of Environmental Terms
- ✓ Application file for Forest Characterization Act
- ✓ Social and Environmental Investment Plans
- ✓ Environmental Legislation / Environmental Consulting Services
- ✓ Drafting of Environmental Terms
- ✓ Baseline data collection activities incl. Onshore and Offshore Natural, Social and Cultural Environment
- ✓ Dispersion Models – Aerial, Noise, Water
- ✓ GIS Mapping of Environmental Constraints



# ASPROFOS Services – Landscape Studies

## Services offered:

- ✓ Zone of Visual Influence
- ✓ Photorealistics
- ✓ Special Logging Studies
- ✓ Replantation Studies
- ✓ Landscape Reinstatement Studies



# ASPROFOS Services –

## *Wastes Management*

---

### **Services offered:**

- ✓ Liquid Wastes Management Study
- ✓ Solid Wastes Management Study
- ✓ Hazardous and Toxic Wastes Management Study
- ✓ Wastes Management Technology Selection
- ✓ Wastes-to-Energy Engineering Support (incl. Energy Efficiency)
- ✓ Wastes Treatment Facilities Design
- ✓ Facilities Construction Supervision

# ASPROFOS Services –

*Health, Safety & Environment Management Systems*



---

## **Services offered:**

- ✓ Application of Environmental Management Systems - EMAS
- ✓ Application of ISO 14001 in Industrial Systems (Oil, Gas and Refinery Sectors)
- ✓ OHSAS 18001 (Occupational Health and Safety Management Systems)
- ✓ HACCP (Hazard Analysis and Critical Control Points)
- ✓ Hazardous Chemical Substances Management Systems
- ✓ Other Environmental Management Systems (i.e. Port Environmental Review System - PERS)

# ASPROFOS Services – *Expert's Report*

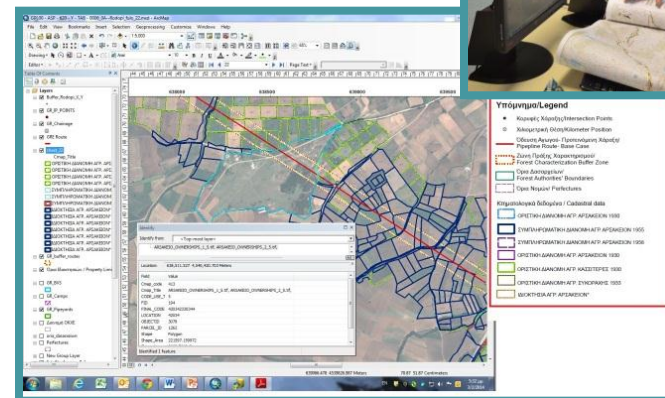
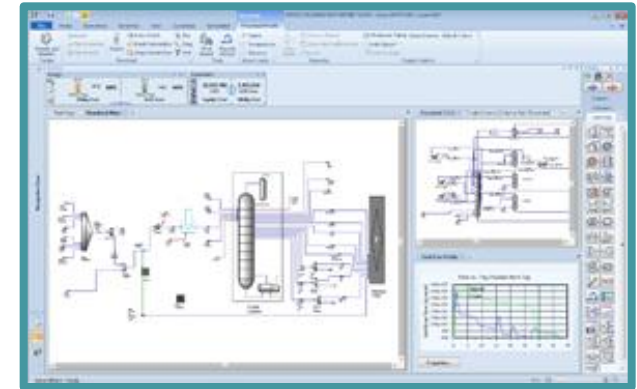
## Services offered:

- ✓ Compilation of Technical Statement and Expert's Report
- ✓ Consulting services for preparation of Project's Owner representative before
  - Courts (National and European)
  - Meetings with Public and Social Entities
  - Meetings with Stakeholders and the Public
- ✓ Project's Technical Consultant providing evidence before:
  - Courts (National and European)
  - Regional and Municipal Councils
  - Public Disclosure to Stakeholders and the Public



# ASPROFOS Services – *Software and Application*

- ✓ Utilities Packages (MS Office, etc)
- ✓ Specialized Software, including:
  - AFT Fathom
  - Design II
  - Aspen HYSYS
- ✓ Computer and Graphic Aided Design, including:
  - Autocad
  - Corel Draw
  - Photoshop
- ✓ Geographical Information Systems & Remote Sensing
  - ArcGIS
  - Autocad Map
  - Google Earth Pro



---

### **Application in:**

- ✓ Data Collection and Geodatabase Structure and Management
- ✓ Image processing, interpretation and remote sensing
- ✓ Site investigations and characterizations
- ✓ GIS Mapping of Environmental Constraints
- ✓ Environmental Monitoring (incl. Landuse/ Landcover analysis and assessment).
- ✓ Emergency planning and monitoring
- ✓ Route and corridor selection
- ✓ Water and power plant site selection
- ✓ GIS modeling for prediction of potential impacts
- ✓ GIS in decision making – Applied Spatial Analysis
- ✓ Web Mapping Services

# Contents

---

## 1. Identifying ASPROFOS

## 2. ASPROFOS Services

## 3. Why ASPROFOS ?

## 4. Successfully Executed Projects

# Why ASPROFOS –

## *Successful Engineering Solutions*



- Extensive know-how in all phases of high complexity projects
- Highly skilled and experienced personnel
- Flexible structure that enables the successful management of a wide variety of projects
- Focus on understanding and meeting the specific needs of each customer
- Provider of services in cooperation with the Hellenic Petroleum Refineries, such as on – the – job – training, best practices etc.
- ISO Certified:
  - ✓ BS-EN-ISO 9001:2008 for Quality Management System
  - ✓ BS EN ISO 14001:2004 for Environmental Management System
  - ✓ OHSAS 18001:2007 for Occupational Health & Safety Management System
  - ✓ ELOT 1429:2008 for Managerial Capability System (Hellenic Organization Standardization)
- Offering of **one-stop-shop services**, from permits to start-up

# Contents

---

## 1. Identifying ASPROFOS

## 2. ASPROFOS Services

## 3. Why ASPROFOS ?

## 4. Successfully Executed Projects

# Successfully Executed Projects – *Overview*

---

## List of sample projects in:

- Safety Studies
- Environmental Studies
- Landscape Studies
- HSE Management Systems
- Technical Expert's Report
- Key References

# Successfully Executed Projects –

## *Sample Projects on Safety Studies*

---

- Aspropyrgos Refinery (HAZOP, SEVESO II, EPD, Area Classification, Fire Protection Studies, 1995-present) [HELPE S.A.]
- Thessaloniki Refinery (Area Classification, Fire Protection Study, 2007-2010) [HELPE S.A.]
- Elefsina Refinery (SEVESO II, HAZOP, EPD, Area Classification, 2008-2013) [HELPE S.A.]
- Megara Tank Farm (Area Classification, SEVESO II study, 2008-2013) [HELPE S.A.]
- Revithousa LNG Terminal Station (SEVESO II, Fire Protection Study, 2011) [DESFA S.A.]
- VTTV Tank Farm, Vassiliko, Cyprus (Fire Protection Study, Area Classification, 2011-present) [VITOL S.A.]
- Aspropyrgos Refinery – Athens International Airport Fuel Pipeline, 2003 [HELPE S.A.]
- VPI Factory, Volos, 2007 [VPI S.A.]
- Agia Triada – Revithousa Island Undersea Natural Gas Pipeline (Internal Contingency Plan, 2003 ) [DESFA S.A.]
- Revithousa 15.5 MW CHP Unit (Fire Prevention Study, 2006) [DESFA S.A.]

# Successfully Executed Projects –

## *Sample Projects of Environmental Studies (a)*

---

- E.S.I.A for Transadriatic Natural Gas Pipeline - TAP (2012 – present) [ENT]
- Strategic Environmental Impact Assessment for High Pressure Natural Gas Pipelines (2011) [DESFA]
- Aspropyrgos Refinery (various EIA) (1995 – present) [HELPE S.A.]
- 390 MW Power Production Unit of HELPE in Thessaloniki (EIA, Liquid Waste Study) (2002) [THESSALONIKI POWER S.A.]
- Authorities Engineering for Power Production Units in 5 Aegean Islands (Installation and Operation Permits, ESIA) (2014 – present) [PPC SA]
- Natural Gas Pipeline – Main pipe, branches of 3000km length, LNG installations (EIA) (1992 – present) [DEPA, DESFA S.A.]
- Burgas- Alexandroupoli Crude Oil Pipeline (2009) [DEP-THRAKI S.A. & I.L.F ]
- E.I.A. for the Eleusis Refinery Upgrade Project (2008-2013) [HELPE S.A.]
- E.S.I.A and Feasibility Studies for the offshore High Pressure Natural Gas Pipeline of Interconnector Greece – Italy Project (2006 – 2012) [POSEIDON]

# Successfully Executed Projects –

## *Sample Projects of Environmental Studies (b)*

---

- Technical and Financial Feasibility Study for Connecting Malta to European Gas Network (2014) [Equinox Advisory Ltd, on behalf of the Maltese Ministry of Energy and Health]
- E.S.I.A. for LNG Terminal Cryogenic Facilities and its expansion (2002 – 2013) [DEPA, DESFA S.A.]
- Technical-Financial Study for the Reduction of Waste Emission from the ELDA, EKO, MOTOR OIL, PETROLA Refineries (2006) [PERPA]
- 15.5 MW CHP Unit on Revithousa Island (EIA) (2005) [DEPA S.A.]
- E.S.I.A. for 16” White Products Pipelines (2009-2013) [HELPE S.A.]
- E.I.A. for Kerosene Pipeline from HELPE Aspropyrgos refinery to Spata Airport (2000) [AIA S.A.]
- Feasibility study for LNG – Terminal at Kavala area (2009) [DEPA S.A.]
- E.S.I.A. for Biogas Power Plant 4.6 MW at Tycherio Evrou (2012) [HELPE Renewable S.A.]
- E.S.I.A and Licensing for various Photovoltaic Arrays in Greece (2011-2012) [HELPE Renewable S.A.]
- Environmental Consulting for Cyprus Energy Regulatory Authority for Power Plants, Wind Farms, LNG Floating Power Station (2005) [E.A.C.], (2007) [CERA]

# Successfully Executed Projects –

## *Sample Projects of Landscape Studies*

- ✓ Special Logging Studies for:
  - the HP NG Pipeline ‘Stefani-Barnabas-Aliberi’ (Prefectures of Attiki, Viotia and Evia -2010)
  - Korintho’s branch HP NG Pipeline (2006) [DEPA - DESFA S.A.]
- ✓ Replantation Studies for:
  - Korintho’s branch HP NG Pipeline (2006)
  - Distomo’s branch HP NG Pipeline (2007)
  - ADG’s branch HP NG Pipeline (2007)
  - the Main HP NG Pipeline (1996-2000) [DEPA - DESFA S.A.]
- ✓ Reinstatement Study for:
  - the Main HP NG Pipeline (1996-2000) [DEPA - DESFA S.A.]
  - the Main HP NG Pipeline in Platamonas’ Special Area (2009) [DESFA S.A.]
- ✓ Photorealistics and Zone of Visual Influence for two Compressor Stations for TAP (2013) [ENT AG]
- ✓ Photorealistics for the Construction of the 3<sup>rd</sup> LNG tank in Revithousa Island (2011) [DESFA S.A.]



# Successfully Executed Projects –

## *Sample Projects of Waste Management*

- Oily water collection tank P89-10 at Megara Industrial Compound (2009) [HELPE S.A.]
- Waste water treatment plant for U-7.0 & U-83 at Elefsina Industrial Compound (2012) [HELPE S.A.]
- Waste water treatment plant for U-5500 at Aspropyrgos Industrial Compound (2012) [HELPE S.A.]
- Biogas Cogeneration Unit 2,4 MWe at Arta (2011) [Agricultural Association of Arta]
- Biogas Power Plant 2 MWe at Kilkis (2012) [GDK S.A.]
- Biomass Power Plant 4,68 Mwe at Tychero (2012) [HELPE Renewables S.A.]



# Successfully Executed Projects –

## *Sample Projects of HSE Management Systems*

---

- Development of EMAS Environmental Management System for the Aspropyrgos Refinery (2003-2009) [HELPE S.A.]
- Development of Environmental Management System for the Port of Piraeus (2004) [PPA S.A.]
- Compilation of Environmental Regulation for the Port of Piraeus (HGG 1389/B/10.09.2004) [PPA S.A.]
- Burgas – Alexandroupoli Crude Oil Pipeline (Environmental Policy, Environment Management Procedures) (2009) [TBP S.A.]
- Implementation and maintenance support of ISO 14001 and OHSAS 18001 Management Systems at HELPE Aspropyrgos and Eleusis Refineries (2010-2013) [HELPE S.A.]
- Implementation of ISO 14001 and OHSAS 18001 Management Systems at HELPE Head Office (2013) [HELPE S.A.]

# Successfully Executed Projects –

## *Sample Projects of Technical Expert's Report*

- For the HP NGP “Stefani – Varnavas – Aliveri”, before the Council of State, supporting the Project’s :
  - ✓ Environmental Terms Approval
  - ✓ Installation Permit (2011) [DEPA S.A.]
- For the Main HP NGP – Keratsini Branch, before the Council of State supporting the Project’s Environmental Terms Approval (1994) [DEPA S.A.]
- For the Main HP NGP – Korinthos Branch, before the Council of State, supporting the Project’s Environmental Terms Approval (2000) [DEPA S.A.]
- For the Power Plant of 390 MW in Thessaloniki's Industrial Compound, supporting the Project’s Environmental Terms Approval, before:
  - ✓ the Council of State
  - ✓ the European Court of Justice (2005) [ELPE S.A.]



# KEY REFERENCES - Main National High Pressure Natural Gas Transmission System

## Main National High Pressure Natural Gas Pipeline and branches

Size / length: 36" / 104 km and 30" / 411 km : Total 515 km (including the construction of 32 Scraper and Line Valve Stations) and 17 Branches of 790km in total ranging from 10" – 36" and from 70 – 150 barg

### Services Rendered:

- Basic and Detailed Design,
- Services on Safety,
- Specialized Seismic Studies
- Environmental Impact Studies
- Stakeholders Engagement and Permits Acquisition,
- Construction Management and Construction supervision Services
- Contract Administration Services,
- Services on Quality Matters,
- Close Out Activities,
- Final Documentation packages



**Client:** Public Gas Corporation of Greece – DEPA S.A.

**Location:** Main Pipeline routing begins from the Greek-Bulgarian Border and ends in the Attica area, while the branches start from main pipeline towards various cities of Greece.

# KEY REFERENCES - Main National High Pressure Natural Gas Transmission System

## Above Ground Installations

- ✓ 1 Compressor Station
- ✓ 2 Border Metering Stations
- ✓ 42 Metering, Regulating, M/R Stations

## Services Rendered:

- Stakeholders Engagement and Permits Acquisition
- Safety Studies,
- Environmental Impact Assessment
- Basic Design,
- Technical Evaluation of Bids,
- Review of Contractor's Detailed Engineering,
- Construction Management and Construction Supervision Services,
- Contract Administration,
- Quality Services,
- Close Out Activities

**Clients:** Public Gas Corporation of Greece - DEPA S.A.,  
Hellenic Gas Transmission System Operator - DESFA S.A.

**Location:** Greece



# KEY REFERENCES – Transadriatic High Pressure Natural Gas Pipeline

Size/ length: 48"/ [550 + 215] km (95 barg). [23 + 9] Block Valve Stations. [2 +1] Compressor Stations

## Services Rendered:

- Stakeholders Engagement Activities (GR)
- Basic Design (GR & AL),
- Safety Study (GR)
- Baseline data collection activities (GR), incl.
  - Abiotic parameters (air, water, soil, landscape) & Biodiversity (flora and fauna – terrestrial and aquatic) surveys,
  - Socioeconomic (household survey, cultural heritage resources)
- Environmental and Social Impact Assessment (GR), incl.
  - Appropriate Assessments
  - Air Dispersion Model
  - Noise Emission Model
  - Zone of Visual Influence and Photorealistic
- ESPOO Report (GR)
- ESIA Consultation and Public Disclosure (GR)
- TAP Permitting in Greece and Albania



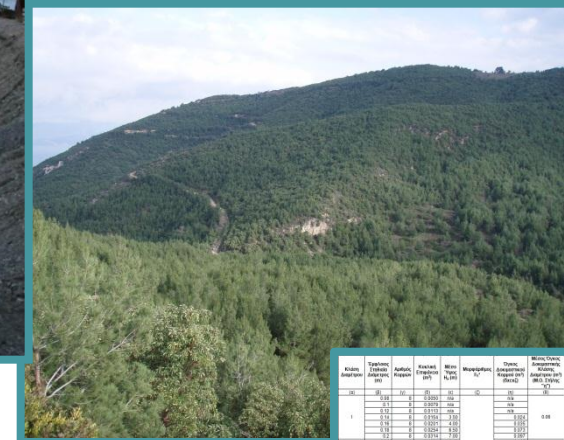
**Clients:** TAP AG, ENT

**Location:** From Greek-Turkish Border to Greek-Albanian Border.



### Services Rendered:

- 

[illegible]

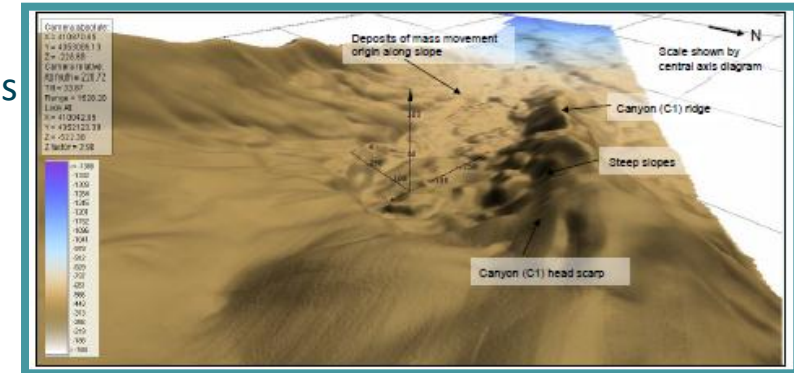
**Location:** Prefectures of Attica, Viotia and Evia

# KEY REFERENCES – Offshore Interconnector Greece - Italy

Size / length: 32" / 146 km (8 km onshore – 136 km offshore), 140 barg. 1 Block Valve Station and 1 Compressor Station

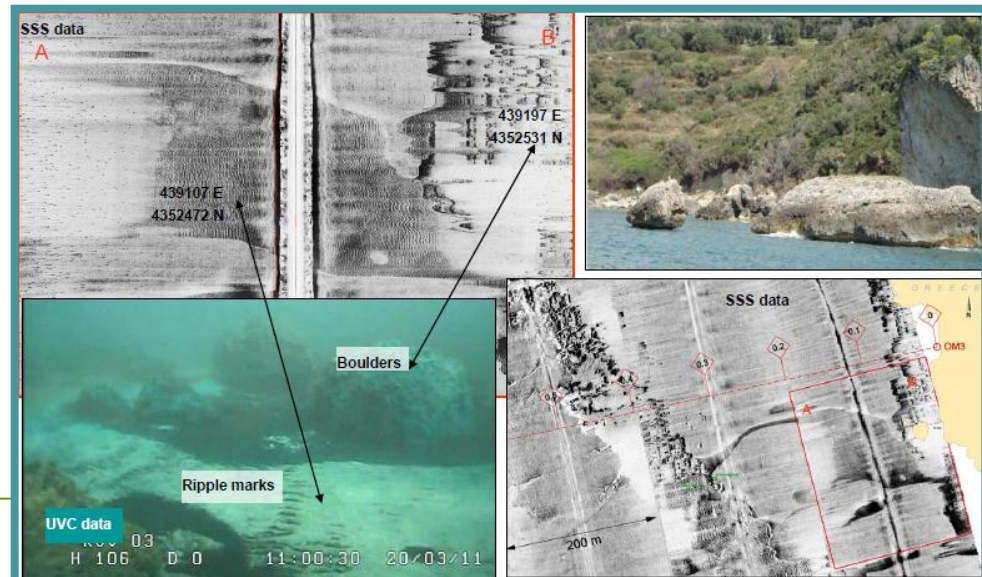
## Services Rendered:

- Stakeholders Engagement and Contact with Authorities
- Specialized Seismic Studies
- Environmental Impact Study
- Air Dispersion Model
- Permits Acquisition,
- ESPOO Report



**Client:** Public Gas Corporation of Greece – DEPA S.A.

**Location:** Greece (Epirus)



# KEY REFERENCES – Burgas/ Alexandroupolis Crude Oil Pipeline

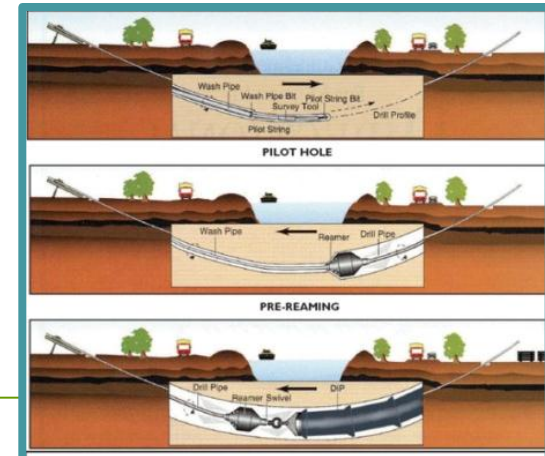
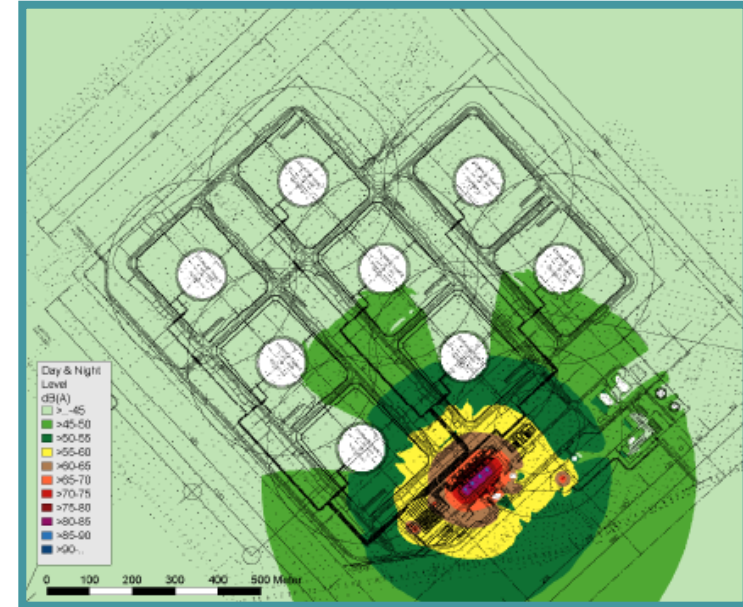
Size / length: 42" / 125 km. Tankfarm: 95 ha, 1.200.000 m<sup>3</sup>.  
Onshore Facilities and 2 SPM at 11 km distance from the shore

## Services Rendered:

- Stakeholders Engagement
- Permits Acquisition
- Route Refinement
- Consulting Services
- Documents Review
- Environmental Impact Study, incl. HV Transmission Line
- Wastes Management Plan for Tankfarm
- Oil Spill Scenario
- Appropriate Assessment
- Air Dispersion Model
- ESIA Public Consultation
- ESPOO Report

**Client:** DEP Thraki, TBP, ILF

**Location:** Greece, R. of Evros.



# KEY REFERENCES – HELPE Elefsina's Refinery Upgrading Project

Upgrading works for optimization of refinery production with simultaneous increase in white products, minimization of wastes and enhancement of safety. Budget: 1,200 million Euros.

## Services Rendered:

- Engagement in Front End Engineering Design
- Detailed Design of Crude Distillation unit revamp
- Detailed Design of offsites facilities with change of service in storage tanks and pumping networks
- Detailed Design of Waste Water Treatment unit, Nitrogen unit, Water Demineralization unit
- Preparation of Environmental Impact Study
- Preparation of Fire Fighting protection study,
- Preparation of a SEVESO type Safety Study
- Handling the construction permitting issues
- Participation in construction supervision

**Client:** Hellenic Petroleum S.A.

**Location:** Attica, Elefsina



# KEY REFERENCES – Waste water treatment plant at Aspropyrgos Industrial Compound

## Process Data:

- Design Flow Rate: 350m<sup>3</sup>/h. Influent Oil: Average 50 mg/l, Peak 300mg/l. TSS: Average 80mg/l. Skimmed froth flow rate: 5-10% of incoming flow.

## Services Rendered:

- Permits Acquisition
- Basic Design,
- Safety Study
- Environmental Impact Assessment
- Construction Management and Construction Supervision

**Clients:** HELPE s.a.

**Location:** Greece, Athens



# KEY REFERENCES – LNG Terminal at Revithousa Island

Size: 130.000 m<sup>3</sup> LNG storage capacity/ 3<sup>rd</sup> tank expansion + 95.000 m<sup>3</sup>.

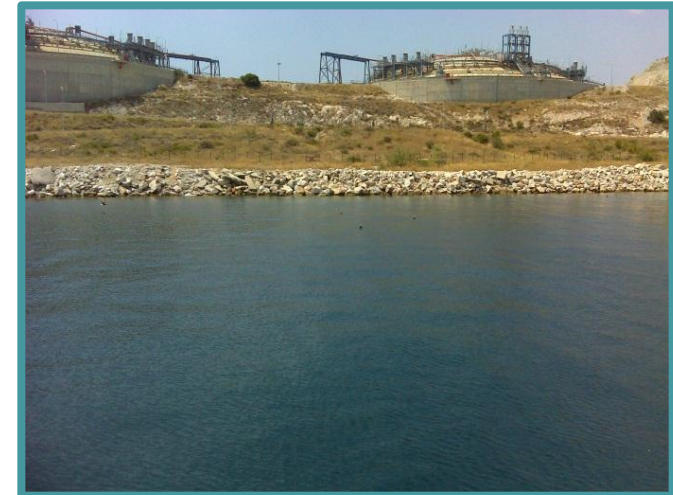
Cogeneration Power Unit: 13 MWe

## Services Rendered:

- Basic Design and Review of Detail Design,
- Stakeholders Engagement and Permits Acquisition
- Specialized Seismic Studies
- Safety Study
- Environmental Impact Assessments (incl. Initial 2 tanks and expansion, Land reclamation works, Power generation plant
- Wastes Management Study (Liquid and Solid)
- Oceanic Study for Dispersion of Cold Water
- Air Dispersion Model
- Construction Management and Supervision
- Services on Quality Matters
- Close Out Activities,
- Final Documentation packages

**Clients:** Public Gas Corporation of Greece - DEPA S.A.,  
Hellenic Gas Transmission System Operator - DESFA S.A.

**Location:** Greece, Revithousa Island



# KEY REFERENCES – Feasibility Study for LNG Kavala

Size: up to 150.000 m<sup>3</sup> LNG storage (up to 3 tanks)

## Services Rendered:

- Siting Investigation
- Feasibility Study
- Oceanographic Data report
- Contact with Authorities

**Clients:** Public Gas Corporation of Greece - DEPA S.A.

**Location:** Greece , Municipality of Kavala



# KEY REFERENCES – 390 MW Power Production Unit in Thessaloniki

Size: 390 MWe Power Plant

## Services Rendered:

- Permits Acquisition
- Basic Design,
- Specialized Seismic Studies
- Safety Study
- Environmental Impact Assessment
- Air Dispersion Model
- Wastes Management Study (Liquid and Solid)
- Thermal Plume Dispersion Model – Air and Water
- ESIA Consultation and Public Disclosure
- Construction Management and Construction Supervision



**Clients:** Thessaloniki Energy – ELPEDISON

**Location:** Greece, Thessaloniki

# KEY REFERENCES – Power Production Plants in 5 Aegean Islands

- Size:
1. 18.7 MWe in Andros Isl.
  2. 4.2 MWe in Astypalaia Isl.
  3. 16 MWe in Ikaria Isl.
  4. 10 MWe in Symi Isl.
  5. 8 MWe in Skyros Isl.

## Services Rendered:

- Installation Permit Acquisition
- Operation Permit Acquisition
- Environmental and Social Impact Assessment
- Air Dispersion Model
- Noise Emulation Model
- Wastes Management Study (Liquid and Solid)

**Clients:** Public Power Production (PPC) SA

**Location:** Greece, Aegean Sea



# KEY REFERENCES – Biogas Power Plant

## 4.6MW at Tycherο

Size: 4,68 MW. Operational Time: 8000 h/year -> 37,472 MWh / year. Biomass consumption:  
44.500 tn / year

### Services Rendered:

- Contact with Authorities,
- Compatibility with Special Physical Planning for Renewable Energy Sources Projects
- Baseline data collection activities, incl.
  - Abiotic parameters (air, water, soil, landscape)
  - Biodiversity (flora and fauna) surveys,
- Environmental and Social Impact Assessment
- Forest Characterization Application File
- Follow up of Environmental Terms Application

**Clients:** HELPE Renewables sa

**Location:** Greece, Municipality of Soufli



# KEY REFERENCES – Photovoltaic Array 4MW at HELPE Industrial Compound of Thessaloniki

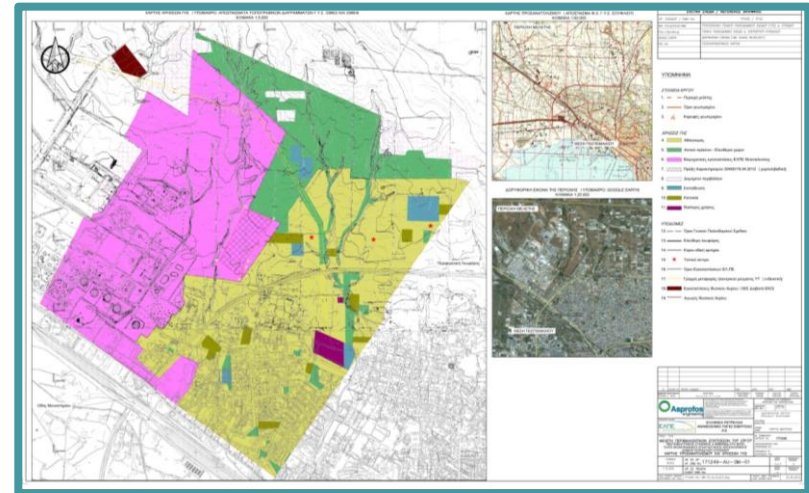
Size: 3,998 MWe. 13.328 Solar Panels. Area: 8 ha.

## Services Rendered:

- Contact with Authorities,
- Baseline data collection activities, incl.
  - Abiotic parameters (air, water, soil, landscape)
  - Biodiversity (flora and fauna) surveys,
- Environmental and Social Impact Assessment,
- Forest Characterization Application File
- Follow up of Environmental Terms Application

**Clients:** HELPE Renewables sa

**Location:** Greece , Thessaloniki





***THANK YOU FOR YOUR ATTENTION!***

284, EL. VENIZELOU str. GR-176 75 KALLITHEA  
ATHENS, GREECE

Tel.: +302109491600

Fax: +302109491610

e-mail: [hse@asprofos.gr](mailto:hse@asprofos.gr)

<http://www.asprofos.gr>